



Product Data Sheet

Průmyslové zářivkové svítidlo

PRIMA 236 STAINLESS
304 230-240V EVG PAR
EM1h IP66



Order number

910300240

Unit EAN13 code

8595209928603

General information

Model/Description	Zářivkové svítidlo/Fluorescent fixtures
Finish	Průmyslové/industrial
Brand/Manufacturer	NBB
Material	Stainless Steel 304
Lamp type	T8
Degree of protection (IP)	IP66
Dimmable	Ne
Autonomy	1 h
Suitable for suspended mounting	Ano
Lamp type	Zářivka T8 (26mm)
Nominal voltage (V)	230 - 240 V
Degree of protection (IP)	IP66
Suitable for number of lamps	2
Suitable for wall mounting	Ano
Emergency light	Ano
Dimmable by conventional dimmers	Ne
Název položky	PRIMA 236 STAINLESS 304 230-240V EVG PAR EM1h IP66
Typ nouzového provozu	Trvalý

Electrical characteristics

Nominal wattage	2 x 36 W
Operating voltage (V)	220 - 240 V
Type of Voltage	AC
Lowest permitted operating voltage (V)	190 V
Lamp power	36 W

Circuit	Paralelně-kompenzační
Voltage type	AC/DC
Total power (W) (light fitting)	75 W
Working conditions	
Charging time	24 h
Output frequency of ballast (driver)	40 kHz
Operating frequency	50 - 60 Hz
Battery type	NICD 6V/1.800mAh
Light source is part of the fixture	Ne
Hot restart	Ano
Installation height (m)	2 - 5 m
Application	Všeobecné osvětlování
Suitable for through-wiring	Ne
Lamp holder type	G13
Type of control gear	Elektronický nestmívatelný
Ambient temperature	-20/+40 °C
Reflector rotatable	Ne
Fire resistance "D"	Ano
Fire resistance "F"	Ano
Fire resistance "FF"	Ano
Emergency unit integrated	Ano
Physical characteristics	
Dimensions (mm)	1304 x 195 x 95 mm
Packing method	1
Weight gross	7480 g
Spacing of fixing holes	1100 mm
Width	195 mm
Reflector	Vysoce leštěný
Colour housing	Nerezová ocel
Weight netto	6720 g
Length	1304 mm
Height/depth (mm)	95 mm
Material housing	Ocel
Colour cover	Bez barvy
Material cover	Ostatní
Impact strength	IK10
EuP Parameters	
The rate of premature failures	<1 %
Additional information	
With lamp	Ne
Lighting characteristics	
Anti-glare limiting UGR lengthwise	19

Anti-glare limiting UGR crosswise	19
Light outlet	Přímé
Light sharing	Široký úhel

Safety information

Safety instructions	www.nbb.cz
Protection class	Ochranným vodičem

Energetic characteristics

Energy Efficiency Index	A2
Lamp Power factor (PF)	>0,98

Exclusion of liability

Changes to data are subject to prior notice. NBB Bohemia s.r.o. accepts no responsibility for damages caused by inaccurate interpretation of the content on this site.

Notice

This product ranks among electrotechnical products powered by mains voltage 230-240V. For safety reasons, it is recommended that the assembly, connection or disassembly be carried out by a person with an appropriate electrotechnical qualification. Please note that the product may only be put into service with original covers, otherwise there may be a risk of electric shock, especially from the terminal block. Only use the product in places that are suitable for this purpose; do not use products intended for indoor use only in the outdoor environment. When installing or dismantling an emergency luminaire, we recommend disconnecting the power supply otherwise there may be a risk of electric shock. Observe the prescribed position when operating the product and how it is attached. Only connect the product to the rated voltage, or load it only to the maximum permitted power. Install only light sources for this type of luminaire. The manufacturer can not be held responsible for damages resulting from inappropriate connection, connection to an unsuitable distribution system, or damage resulting from the use of an unsuitable light source. Observe the operating values on the label. Do not expose the product to inappropriate weathering or high temperatures unless it is expressly stated that the product is intended to be operated under these conditions. When installing, wiring or disassembling, follow the generally accepted safety precautions.

NOTICE:

The emergency luminaire is energized even after disconnecting the power supply due to its own charged batteries. Therefore, it is recommended that the installation and disassembly be carried out only by a person with the appropriate electrotechnical qualifications.

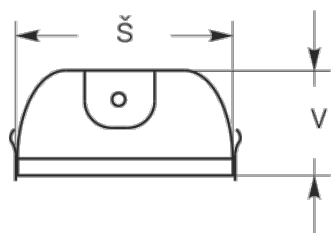
Do not throw the emergency luminaire into the mixed waste after use. Take it to the nearest store, collection yard, or other designated location for free recycling. You can also deliver the used luminaires for recycling at our sales outlets. Emergency lights and modules contain a rechargeable battery. You can find the list of collection points on the Retel and Ekolamp Collective Systems pages.

If the luminaire contains batteries

If the luminaire contains rechargeable rechargeable batteries for emergency operation, we provide a 6 months warranty for these batteries from the date of commissioning. This warranty period is valid for both B2C and B2B customers.

Popis

Technical drawing



NBB Bohemia s.r.o., Sídliště 693, 407 22 Benešov nad Ploučnicí
<https://www.nbb.cz/en/> | hotmail@nbb.cz

Copyright CE 2024 NBB Bohemia s.r.o Všechna práva vyhrazena.