



**NBB Bohemia s.r.o.**

Výroba a prodej osvětlovací techniky, Sídliště 693, 407 22 Benešov nad Ploučnicí



## Product Data Sheet

Průmyslové zářivkové svítidlo

**PRIMA 218 STAINLESS  
304 230-240V EVG PAR  
IP66**



Order number

**910300035**

Unit EAN13 code

**8595209928474**

### General information

Model/Description	<b>Zářivkové svítidlo/Fluorescent fixtures</b>
Finish	<b>Průmyslové/industrial</b>
Brand/Manufacturer	<b>NBB</b>
Material	<b>Stainless Steel 304</b>
Lamp type	<b>T8</b>
Degree of protection (IP)	<b>IP66</b>
Dimmable	<b>Ne</b>
With light sensor	<b>Ne</b>
Suitable for suspended mounting	<b>Ano</b>
Lamp type	<b>Zářivka T8 (26mm)</b>
Nominal voltage (V)	<b>230 - 240 V</b>
Degree of protection (IP)	<b>IP66</b>
Suitable for number of lamps	<b>2</b>
Suitable for wall mounting	<b>Ano</b>
Emergency light	<b>Ne</b>
Dimmable by conventional dimmers	<b>Ne</b>
Název položky	<b>PRIMA 218 STAINLESS 304 230-240V EVG PAR IP66</b>

### Electrical characteristics

Nominal wattage	<b>2 x 18 W</b>
Operating voltage (V)	<b>220 - 240 V</b>
Type of Voltage	<b>AC</b>
Lamp power	<b>18 W</b>
Circuit	<b>Paralelně-kompenzační</b>
Voltage type	<b>AC/DC</b>

Nominal current (A)	0,155 A
Total power (W) (light fitting)	39 W

### Working conditions

Output frequency of ballast (driver)	40 kHz
Operating frequency	50 - 60 Hz
Light source is part of the fixture	Ne
Hot restart	Ano
Installation height (m)	2 - 5 m
Application	Všeobecné osvětlování
Suitable for through-wiring	Ne
Lamp holder type	G13
Type of control gear	Elektronický nestmívatelný
Ambient temperature	-20/+40 °C
Reflector rotatable	Ne
Fire resistance "D"	Ano
Fire resistance "F"	Ano
Fire resistance "FF"	Ano
Emergency unit integrated	Ne

### Physical characteristics

Dimensions (mm)	705 x 195 x 95 mm
Packing method	1
Weight gross	4060 g
Spacing of fixing holes	500 mm
Width	195 mm
Reflector	Vysoce leštěný
Colour housing	Nerezová ocel
Weight netto	3570 g
Length	705 mm
Height/depth (mm)	95 mm
Material housing	Ocel
Colour cover	Bez barvy
Material cover	Ostatní
Impact strength	IK10

### EuP Parameters

The rate of premature failures	<1 %
--------------------------------	------

### Additional information

With lamp	Ne
-----------	----

### Lighting characteristics

Anti-glare limiting UGR lengthwise	19
Anti-glare limiting UGR crosswise	19
Light outlet	Přímé
Light sharing	Široký úhel

## Safety information

Safety instructions	<a href="http://www.nbb.cz">www.nbb.cz</a>
Protection class	Ochranným vodičem

## Energetic characteristics

Energy Efficiency Index	A2
Lamp Power factor (PF)	>0,98

## Exclusion of liability

Changes to data are subject to prior notice. NBB Bohemia s.r.o. accepts no responsibility for damages caused by inaccurate interpretation of the content on this site.

## Notice

This product ranks among electrotechnical products powered by mains voltage 230-240V. For safety reasons, it is recommended that the assembly, connection or disassembly be carried out by a person with an appropriate electrotechnical qualification. Please note that the product may only be put into service with original covers, otherwise there may be a risk of electric shock, especially from the terminal block. Only use the product in places that are suitable for this purpose; do not use products intended for indoor use only in the outdoor environment. When installing or dismantling an emergency luminaire, we recommend disconnecting the power supply otherwise there may be a risk of electric shock. Observe the prescribed position when operating the product and how it is attached. Only connect the product to the rated voltage, or load it only to the maximum permitted power. Install only light sources for this type of luminaire. The manufacturer can not be held responsible for damages resulting from inappropriate connection, connection to an unsuitable distribution system, or damage resulting from the use of an unsuitable light source. Observe the operating values on the label. Do not expose the product to inappropriate weathering or high temperatures unless it is expressly stated that the product is intended to be operated under these conditions. When installing, wiring or disassembling, follow the generally accepted safety precautions.

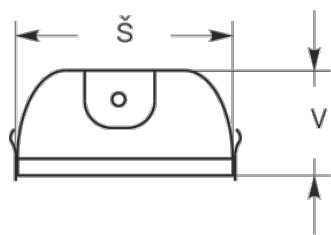
### NOTICE:

The emergency luminaire is energized even after disconnecting the power supply due to its own charged batteries. Therefore, it is recommended that the installation and disassembly be carried out only by a person with the appropriate electrotechnical qualifications.

Do not throw the emergency luminaire into the mixed waste after use. Take it to the nearest store, collection yard, or other designated location for free recycling. You can also deliver the used luminaires for recycling at our sales outlets. Emergency lights and modules contain a rechargeable battery. You can find the list of collection points on the Retel and Ekolamp Collective Systems pages.

## Popis

## Technical drawing



**NBB Bohemia s.r.o., Sídliště 693, 407 22 Benešov nad Ploučnicí**  
<https://www.nbb.cz/en/> | [hotmail@nbb.cz](mailto:hotmail@nbb.cz)

Copyright CE 2024 NBB Bohemia s.r.o Všechna práva vyhrazena.