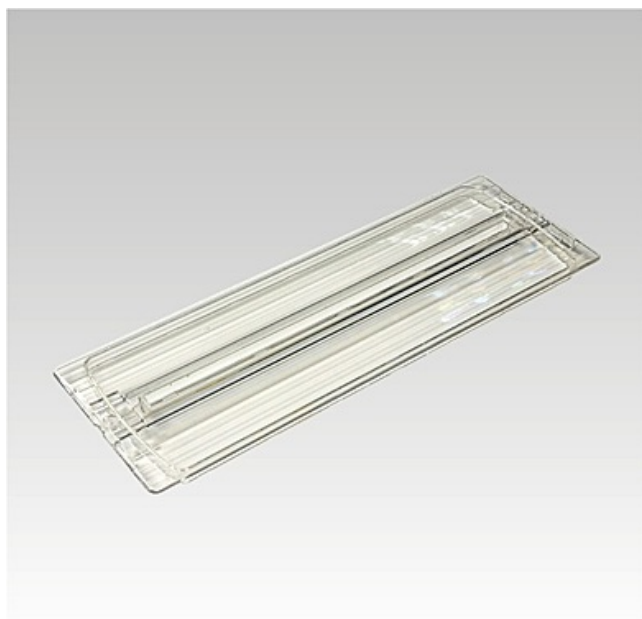




**NBB Bohemia s.r.o.**

Výroba a prodej osvětlovací techniky, Sídliště 693, 407 22 Benešov nad Ploučnicí



## Product Data Sheet

Příslušenství k nouzovému svítidlu

## PC difusor for LAURA / VILMA A803 hanging table



Order number

**910113020**

Unit EAN13 code

**8595209918048**

### General information

Brand/Manufacturer	<b>NBB</b>
Material	<b>Plast</b>
Colour	<b>Bez barvy</b>
Název položky	<b>PC difuzor pro závěsnou tabulku A803 LAURA</b>

### Working conditions

Application	<b>difuzor</b>
Type of accessory	<b>Ostatní</b>

### Physical characteristics

Packing method	<b>1</b>
Width	<b>mm</b>
Height	<b>mm</b>
Length	<b>mm</b>
Material	<b>Plast</b>

### Safety information

Safety instructions	<b><a href="http://www.nbb.cz">www.nbb.cz</a></b>
---------------------	---

### Exclusion of liability

Changes to data are subject to prior notice. NBB Bohemia s.r.o. accepts no responsibility for damages caused by inaccurate interpretation of the content on this site.

### Notice

This product ranks among electrotechnical products powered by mains voltage 230-240V. For safety reasons, it is recommended that the assembly, connection or disassembly be carried out by a person with an appropriate electrotechnical qualification. Please note that the product may only be put into service with original covers, otherwise there may be a risk of

electric shock, especially from the terminal block. Only use the product in places that are suitable for this purpose; do not use products intended for indoor use only in the outdoor environment. When installing or dismantling an emergency luminaire, we recommend disconnecting the power supply otherwise there may be a risk of electric shock. Observe the prescribed position when operating the product and how it is attached. Only connect the product to the rated voltage, or load it only to the maximum permitted power. Install only light sources for this type of luminaire. The manufacturer can not be held responsible for damages resulting from inappropriate connection, connection to an unsuitable distribution system, or damage resulting from the use of an unsuitable light source. Observe the operating values on the label. Do not expose the product to inappropriate weathering or high temperatures unless it is expressly stated that the product is intended to be operated under these conditions. When installing, wiring or disassembling, follow the generally accepted safety precautions.

#### **NOTICE:**

The emergency luminaire is energized even after disconnecting the power supply due to its own charged batteries. Therefore, it is recommended that the installation and disassembly be carried out only by a person with the appropriate electrotechnical qualifications.

Do not throw the emergency luminaire into the mixed waste after use. Take it to the nearest store, collection yard, or other designated location for free recycling. You can also deliver the used luminaires for recycling at our sales outlets. Emergency lights and modules contain a rechargeable battery. You can find the list of collection points on the Retel and Ekolamp Collective Systems pages.

#### **If the luminaire contains batteries**

If the luminaire contains rechargeable batteries for emergency operation, we provide a 6 months warranty for these batteries from the date of commissioning. This warranty period is valid for both B2C and B2B customers.

#### **Notice**

Under the scope of Act 185/2001 Coll. as amended, this product is included in waste group 5 (light sources and luminaires). In view of the harmful effects of mercury on the environment and on human health, the creators of group 5 waste (consumers) are obliged to dispose of used light sources for recycling. Do not throw this product into mixed waste after use. Take it to the nearest store, collection yard, or other designated location for free recycling. You can also dispose of the used products for recycling in our sales outlets or in collection points of collective recycling systems or municipal collection yards. Ecological recycling of waste electrical and electronic equipment is ensured through the RETELA collective system ([www.retela.cz](http://www.retela.cz)).

#### **Notice (LVD)**

LED light sources ranks among electrotechnical products powered by mains 230-240V. For safety reasons, it is recommended that the assembly, connection or disassembly be carried out by a person with an appropriate electrotechnical qualification. When installing or disassembling, it is advisable to disconnect the power supply otherwise there may be a risk of electric shock. Only use the product in the luminaires designed for this type of light source. The manufacturer can not be held responsible for damages resulting from inappropriate connection, connection to an unsuitable distribution system, or damages resulting from mechanical damage to the light source. Observe the operating values on the product. Do not expose the product to inappropriate weathering or high temperatures unless it is expressly stated that the product is intended to be operated under these conditions. When installing, wiring or disassembling, follow the generally accepted safety precautions.

#### **Notice**

Single LED chip failure, luminous flux deviation +/- 10% as well as chromaticity deviation +/- 150K are in compliance with applicable standards and are not a reason for complaint.

#### **Popis**

**NBB Bohemia s.r.o., Sídliště 693, 407 22 Benešov nad Ploučnicí**  
<https://www.nbb.cz/en/> | [hotmail@nbb.cz](mailto:hotmail@nbb.cz)

Copyright CE 2024 NBB Bohemia s.r.o. Všechna práva vyhrazena.