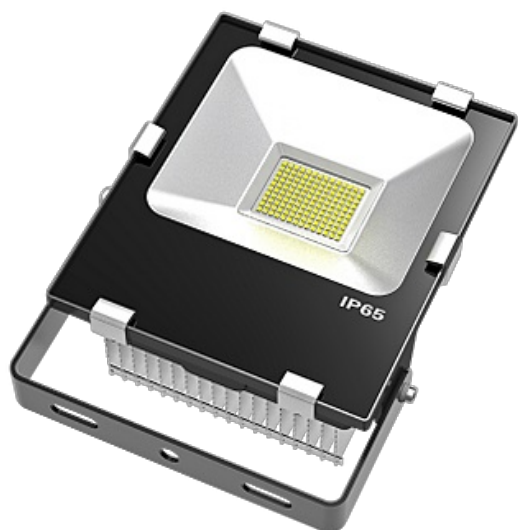




**NBB Bohemia s.r.o.**

Výroba a prodej osvětlovací techniky, Sídliště 693, 407 22 Benešov nad Ploučnicí



## Product Data Sheet

LED reflektor IP65 flood prémiové kvality

**FLS-50W-F 85-305V  
5000K MW FLOOD LED  
IP65 zesílené zadní  
žebrování**



Order number

**253210000**

Unit EAN13 code

**8595209945068**

### General information

Model/Description	<b>LED reflektor</b>
Finish	<b>Průmyslový</b>
Brand/Manufacturer	<b>Unicorn</b>
With light sensor	<b>Ne</b>
Suitable for suspended mounting	<b>Ne</b>
Lamp type	<b>LED</b>
Nominal voltage (V)	<b>230 - 240 V</b>
Degree of protection (IP)	<b>IP65</b>
Suitable for number of lamps	<b>1</b>
Suitable for wall mounting	<b>Ano</b>
Suitable for traverse mounting	<b>Ano</b>
Suitable for pedestal/floor mounting	<b>Ano</b>
Suitable for light-track mounting	<b>Ne</b>
Suitable for clamp-mounting	<b>Ne</b>
Suitable for ceiling mounting	<b>Ano</b>
Název položky	<b>FLS-50W-F 85-305V 4500K MW FLOOD LED IP65</b>

### Electrical characteristics

Rated power (W)	<b>50,0 W</b>
Operating voltage (V)	<b>85 - 305 V</b>
Lowest permitted operating voltage (V)	<b>85 V</b>
Voltage type	<b>AC</b>
Nominal current (A)	<b>0,23 A</b>
System power	<b>50 W</b>
Total power (W) (light fitting)	<b>61,0 W</b>

### Working conditions

Maximum permitted storage temperature	80 °C
Burning position	Libovolná
Application	Všeobecné osvětlování
Suitable for through-wiring	Ne
With movement sensor	Ne
Suitable for frequent switching	Ano
Ambient temperature	-20/+40 °C
Applicable with movement sensor	Ano
Fire resistance "D"	Ano
Type of dimming	Nestmívatelné
Driver included	Ano

### Mounting methods/application

Mounting method	Přisazená
-----------------	-----------

### Physical characteristics

Type of chip	OSRAM
Dimensions (mm)	282 x 207 x 104 mm
Packing method	1
Width	207 mm
Reflector	Ostatní
Colour housing	Černá
Weight netto	2206 g
Length	282 mm
Height/depth (mm)	104 mm
Material housing	Aluminium
Impact strength	IK10
Type of surface	Matný
Number of LEDs	100
Adjustability	Vertikálně

### EuP Parameters

Average Lifetime B50 (h)	50000 h
Luminescence Life maintenance factor	70,0 %
Factor of functional reliability (LSF) after nom. life	50,0 %
Time to 60 % luminous flux	<0,3 s
Number of maximal switching cycles	50000
The rate of premature failures	<0,1 %
Colour difference	80,0 %
Rated service life	50000 h
Turn-on time	<0,3 s

### Additional information

With lamp	Ano
-----------	-----

### Lighting characteristics

Color rendering	1B
Light Colour	chladná bílá
Wavelength range	400 - 760 nm
Dominant wavelength	nm
Colour temperature	4500 K
Colour rendering index CRI	80 Ra
Colour of light	840
Light sharing	Symetrické
Radiation angle	Široký úhel
Colour temperature	4000 - 4500 K
Effective luminous flux	4250 lm
Colour	Bílá
Chromaticity coordinates x	
Chromaticity coordinates y	

### Safety information

Insulation class	Třída I
Safety instructions	<a href="http://www.nbb.cz">www.nbb.cz</a>
Protection class	Ochranným vodičem

### Environmental characteristics

Mercury content	0,00 mg
-----------------	---------

### Energetic characteristics

Lamp Power factor (PF)	0,95
Rated efficiency after 100h	99,0 %
Lamp efficacy	85,0 lm/W

### Exclusion of liability

Changes to data are subject to prior notice. NBB Bohemia s.r.o. accepts no responsibility for damages caused by inaccurate interpretation of the content on this site.

### Notice

Under the scope of Act 185/2001 Coll. as amended, this product is included in waste group 5 (light sources and luminaires). In view of the harmful effects of mercury on the environment and on human health, the creators of group 5 waste (consumers) are obliged to dispose of used light sources for recycling. Do not throw this product into mixed waste after use. Take it to the nearest store, collection yard, or other designated location for free recycling. You can also dispose of the used products for recycling in our sales outlets or in collection points of collective recycling systems or municipal collection yards. Ecological recycling of waste electrical and electronic equipment is ensured through the RETELA collective system ([www.retela.cz](http://www.retela.cz)).

### Notice (LVD)

LED light sources ranks among electrotechnical products powered by mains 230-240V. For safety reasons, it is recommended that the assembly, connection or disassembly be carried out by a person with an appropriate electrotechnical qualification. When installing or disassembling, it is advisable to disconnect the power supply otherwise there may be a risk of electric shock. Only use the product in the luminaires designed for this type of light source. The manufacturer can not be held responsible for damages resulting from inappropriate connection, connection to an unsuitable distribution system, or damages resulting from mechanical damage to the light source. Observe the operating values on the product. Do not expose the product to inappropriate weathering or high temperatures unless it is expressly stated that the product is intended to be operated under these conditions. When installing, wiring or disassembling, follow the generally accepted safety precautions.

### Notice

Single LED chip failure, luminous flux deviation +/- 10% as well as chromaticity deviation +/- 150K are in compliance with applicable standards and are not a reason for complaint.

## Popis

**NBB Bohemia s.r.o., Sídliště 693, 407 22 Benešov nad Ploučnicí**  
<https://www.nbb.cz/en/> | [hotmail@nbb.cz](mailto:hotmail@nbb.cz)

Copyright CE 2024 NBB Bohemia s.r.o Všechna práva vyhrazena.