



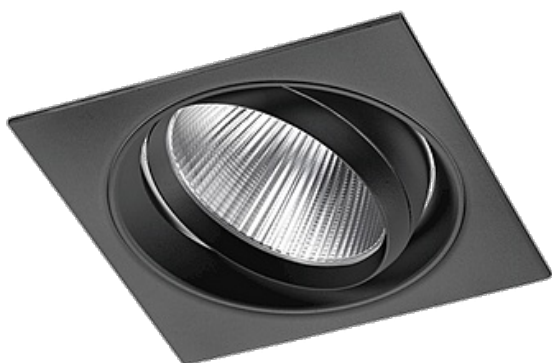
NBB Bohemia s.r.o.

Výroba a prodej osvětlovací techniky, Sídliště 693, 407 22 Benešov nad Ploučnicí

Product Data Sheet

LED zapuštěné světlo R52

Led recessed light R52-28-3095-15-BL



Order number

253464970

Unit EAN13 code

8595209965806

General information

Model/Description	LED svítidlo
Finish	Vestavné
Brand/Manufacturer	GRACION
Nominal service life (h)	50000 h
Degree of protection (IP)	IP20
Dimmable	Ne
Built-in depth	150 mm
Lamp type	LED
Electrical connection with connector system	Ano
Nominal voltage (V)	220 - 240 V
Degree of protection (IP)	IP20
Suitable for number of lamps	1
Suitable for built-in mounting	Ano
Suitable for ceiling mounting	Ano
Dimmable by conventional dimmers	Ne
Název položky	Led recessed light R52-28-3095-15-BL

Electrical characteristics

Nominal wattage	28 W
Rated power (W)	28 W
Operating voltage (V)	100 - 240 V
Type of Voltage	AC
Lowest permitted operating voltage (V)	220 V
Lamp power	28 W
Voltage type	AC

System power	28 W
--------------	------

Working conditions

Integrated driver	Ne
Light source is part of the fixture	Ano
Maximum permitted storage temperature	80 °C
Burning position	Vertikální
Application	Všeobecné osvětlování
Type of control gear	LED driver CC
Suitable for frequent switching	Ano
Ambient temperature	-20/+40 °C
Fire resistance "F"	Ano
Fit for monitor workplace	Ano
Driver included	Ano

Mounting methods/application

Mounting method	Vestavná
-----------------	----------

Physical characteristics

Dimensions (mm)	134 x 134 x 121 mm
Packing method	1
Width	134 mm
Reflector	Matný
Colour housing	Černá
Built-in diameter	125 mm
Length	468 mm
Height/depth (mm)	121 mm
Material housing	Aluminium
Type of surface	Matný
Number of LEDs	1
Swivelling model	Ano
Adjustability	Otočné a výklopné

EuP Parameters

Average Lifetime B50 (h)	50000 h
Luminescence Life maintenance factor	80 %
Factor of functional reliability (LSF) after nom. life	50 %
Number of maximal switching cycles	>250000
The rate of premature failures	<1 %
Colour difference	90 %
Rated service life	50000 h
Energy consumption (AGGR)	28 kWh/1000h
Turn-on time	<0,2 s

Additional information

With lamp	Ano
-----------	-----

Lighting characteristics

Light Colour	teplá bílá
Wavelength range	400 - 800 nm
Luminous flux	2250 lm
Colour temperature	3000 K
Radiation angle	15 °
Colour rendering index CRI	95 Ra
Colour of light	930
Anti-glare limiting UGR lengthwise	19
Anti-glare limiting UGR crosswise	19
Light outlet	Přímé
Light sharing	Symetrické
Radiation angle	Úzký úhel 11-20°
Colour temperature	2800 - 3200 K
Effective luminous flux	2250 lm
Colour	Bílá
Beam angle Degrees (°)	15 °

Safety information

Insulation class	Třída II
Safety instructions	www.nbb.cz
Protection class	Dvojitou izolací

Energetic characteristics

Lamp Power factor (PF)	0,99
Rated efficiency after 100h	99,99 %
Lamp efficacy	80,35 lm/W

Popis

NBB Bohemia s.r.o., Sídliště 693, 407 22 Benešov nad Ploučnicí
<https://www.nbb.cz/en/> | hotmail@nbb.cz

Copyright CE 2024 NBB Bohemia s.r.o. Všechna práva vyhrazena.