



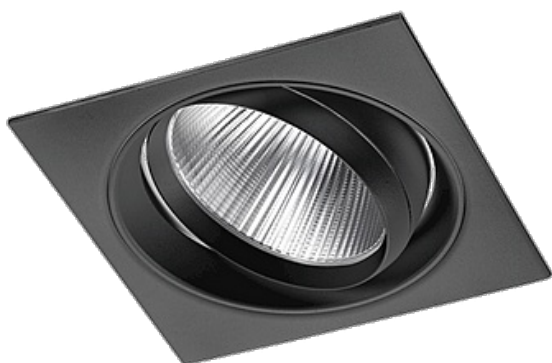
**NBB Bohemia s.r.o.**

Výroba a prodej osvětlovací techniky, Sídliště 693, 407 22 Benešov nad Ploučnicí

## Product Data Sheet

LED zapuštěné světlo R52

## Led recessed light R52-28-3090-15-BL



Order number

**253464930**

Unit EAN13 code

**8595209965721**

### General information

Model/Description	<b>LED svítidlo</b>
Finish	<b>Vestavné</b>
Brand/Manufacturer	<b>GRACION</b>
Nominal service life (h)	<b>50000 h</b>
Degree of protection (IP)	<b>IP20</b>
Dimmable	<b>Ne</b>
Built-in depth	<b>150 mm</b>
Lamp type	<b>LED</b>
Electrical connection with connector system	<b>Ano</b>
Nominal voltage (V)	<b>220 - 240 V</b>
Degree of protection (IP)	<b>IP20</b>
Suitable for number of lamps	<b>1</b>
Suitable for built-in mounting	<b>Ano</b>
Suitable for ceiling mounting	<b>Ano</b>
Dimmable by conventional dimmers	<b>Ne</b>
Název položky	<b>Led recessed light R52-28-3090-15-BL</b>

### Electrical characteristics

Nominal wattage	<b>28 W</b>
Rated power (W)	<b>28 W</b>
Operating voltage (V)	<b>100 - 240 V</b>
Type of Voltage	<b>AC</b>
Lowest permitted operating voltage (V)	<b>220 V</b>
Lamp power	<b>28 W</b>
Voltage type	<b>AC</b>

System power	28 W
--------------	------

#### Working conditions

Integrated driver	Ne
Light source is part of the fixture	Ano
Maximum permitted storage temperature	80 °C
Burning position	Vertikální
Application	Všeobecné osvětlování
Type of control gear	LED driver CC
Suitable for frequent switching	Ano
Ambient temperature	-20/+40 °C
Fire resistance "F"	Ano
Fit for monitor workplace	Ano
Driver included	Ano

#### Mounting methods/application

Mounting method	Vestavná
-----------------	----------

#### Physical characteristics

Dimensions (mm)	134 x 134 x 121 mm
Packing method	1
Width	134 mm
Reflector	Matný
Colour housing	Černá
Built-in diameter	125 mm
Length	468 mm
Height/depth (mm)	121 mm
Material housing	Aluminium
Type of surface	Matný
Number of LEDs	1
Swivelling model	Ano
Adjustability	Otočné a výklopné

#### EuP Parameters

Average Lifetime B50 (h)	50000 h
Luminescence Life maintenance factor	80 %
Factor of functional reliability (LSF) after nom. life	50 %
Number of maximal switching cycles	>250000
The rate of premature failures	<1 %
Colour difference	90 %
Rated service life	50000 h
Energy consumption (AGGR)	28 kWh/1000h
Turn-on time	<0,2 s

#### Additional information

With lamp	Ano
-----------	-----

### Lighting characteristics

Light Colour	teplá bílá
Wavelength range	400 - 800 nm
Luminous flux	2750 lm
Colour temperature	3000 K
Radiation angle	15 °
Colour rendering index CRI	90 Ra
Colour of light	930
Anti-glare limiting UGR lengthwise	19
Anti-glare limiting UGR crosswise	19
Light outlet	Přímé
Light sharing	Symetrické
Radiation angle	Úzký úhel 11-20°
Colour temperature	2800 - 3200 K
Effective luminous flux	2750 lm
Colour	Bílá
Beam angle Degrees (°)	15 °

### Safety information

Insulation class	Třída II
Safety instructions	<a href="http://www.nbb.cz">www.nbb.cz</a>
Protection class	Dvojitou izolací

### Energetic characteristics

Lamp Power factor (PF)	0,99
Rated efficiency after 100h	99,99 %
Lamp efficacy	98,21 lm/W

### Popis

NBB Bohemia s.r.o., Sídliště 693, 407 22 Benešov nad Ploučnicí  
<https://www.nbb.cz/en/> | [hotmail@nbb.cz](mailto:hotmail@nbb.cz)

Copyright CE 2024 NBB Bohemia s.r.o. Všechna práva vyhrazena.